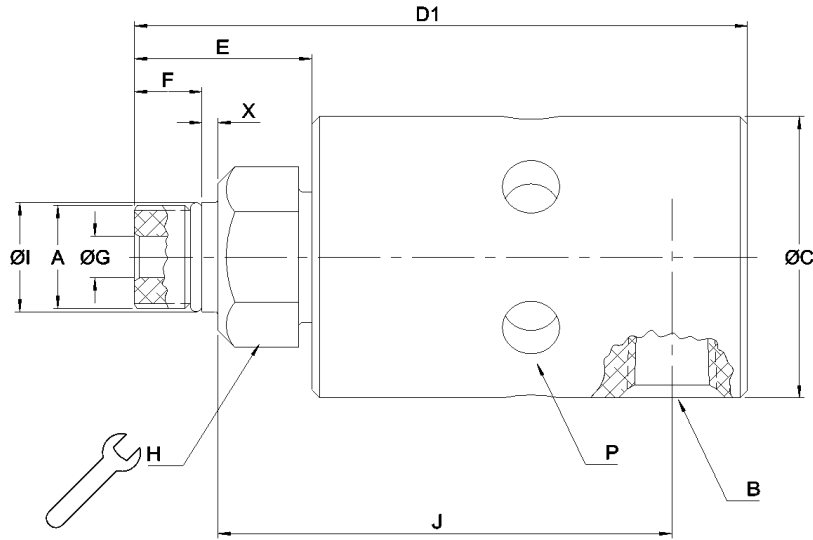


## 1101-632-343

- Single passage for coolant or MQL
- Closed seals for transfer line and similar applications
- Full-flow design has no obstructions to trap swarf or debris
- Bearing-supported with threaded rotor for easy installation
- Deep groove radial ball bearings for smooth operation
- Labyrinth system and large vents to protect ball bearings
- Balanced mechanical seals made from silicon carbide for long life even under difficult operating conditions
- Anodized aluminum components resist corrosion

### ÖLÇÜLER



A	M16x1.5 LH
B	3/8"-19 PT
C	43.6 mm
D1	103 mm
E	30.227 mm
F	15.9 mm
G	6.4 mm
H	24 mm
I	17.993 mm
J	72 mm
P	PT 1/8"-28
X	4.7 mm

### ÇALIŞMA ÖZELLİKLERİ

Kullanım Alanı	MQL, Coolant
Rotor Bağlantısı	M16*1.5 LH, 17.993 mm pilot
Giriş Bağlantısı	3/8"-19 PT
Coolant Max. Akış Hızı	24.3 l/dk.
Coolant Max. Basınç	103.4 bar
Coolant Max. Sıcaklık	71 °C
MQL Max. Akış Hızı	498 l/dk.
MQL Max. Basınç	10 Bar
MQL Max. Sıcaklık	71 °C